

---

PERMIT ATTACHMENT

APPENDIX VI

PROCESS FLOW DIAGRAMS AND PIPING AND  
INSTRUMENTATION DIAGRAMS

This document was not altered from the April 2016 Application.

September 2018

---

APPENDIX VI

PROCESS FLOW DIAGRAMS AND PIPING AND  
INSTRUMENTATION DIAGRAMS

FOR

SIEMENS INDUSTRY, INC.

PARKER REACTIVATION FACILITY

PARKER, ARIZONA

Revision 1  
April 2012

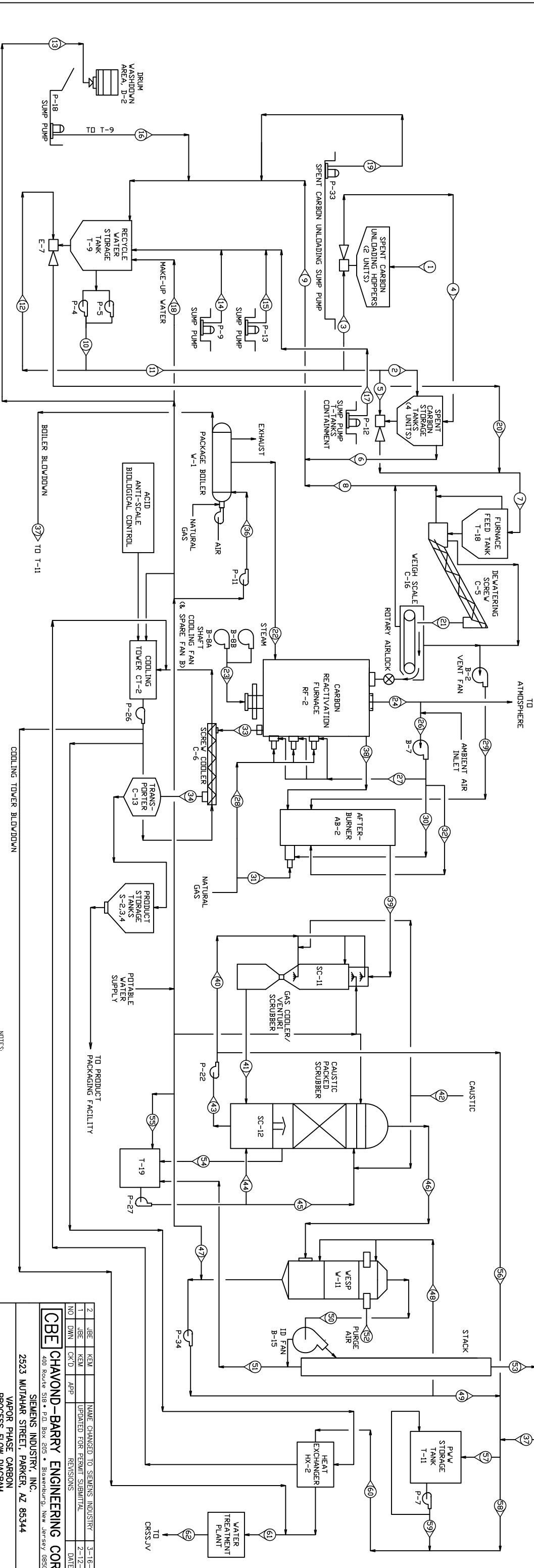
## TABLE OF CONTENTS

<b><u>DRAWING NO.</u></b>	<b><u>DESCRIPTION</u></b>
PC-1466-PR-003	Vapor Phase Carbon Process Flow Diagram Balance for RF-2
PC-1466-PR-004	Liquid Phase Carbon Process Flow Diagram Balance for RF-2
D11135-200	Reactivation Facility Legend & Speciality Items Piping & Instrumentation Diagram
D11135-201	Reactivation Facility Spent Carbon Storage / H-1 Piping & Instrumentation Diagram
D11135-202	Reactivation Facility Spent Carbon Storage / H-2 Piping & Instrumentation Diagram
D11135-203	Reactivation Facility Recycle Water Piping & Instrumentation Diagram
D11135-205	Reactivation Facility Process Water Discharge to POTW Piping & Instrumentation Diagram
D11135-210	Reactivation Facility Reactivated Carbon Storage Piping & Instrumentation Diagram
D11135-211	Reactivation Facility Utilities – NG – PW - STM Piping & Instrumentation Diagram
D11135-212	Reactivation Facility Utilities – Compressed Air Piping & Instrumentation Diagram
D11135-213	Reactivation Facility Furnace #2 Feed System Piping & Instrumentation Diagram
D11135-214	Reactivation Reactivation Furnace #2 Piping & Instrumentation Diagram
D11135-215	Reactivation Furnace #2 Product Handling Piping & Instrumentation Diagram
D11135-216	Reactivation Facility Furnace #2 Off Gas Scrubber Piping & Instrumentation Diagram

- D11135-217      Reactivation Facility Furnace #2 Precipitator & Exhaust Piping & Instrumentation Diagram
  
- D11135-218      Reactivation Facility Product Handling System Piping & Instrumentation Diagram

LINE NO.	UNIT	TYPE	QTY	UNIT PRICE	TOTAL PRICE	DATE	STATUS	REMARKS
1	SPENT CARBON	WATER	91	13154	1206214	12/27	AMBIENT	
2	SPENT CARBON	WATER	91	13154	1206214	12/27	AMBIENT	
3	SPENT CARBON	WATER	91	13154	1206214	12/27	AMBIENT	
4	SPENT CARBON	WATER	91	13154	1206214	12/27	AMBIENT	
5	SPENT CARBON	WATER	91	13154	1206214	12/27	AMBIENT	
6	SPENT CARBON	WATER	91	13154	1206214	12/27	AMBIENT	
7	SPENT CARBON	WATER	91	13154	1206214	12/27	AMBIENT	
8	SPENT CARBON	WATER	91	13154	1206214	12/27	AMBIENT	
9	SPENT CARBON	WATER	91	13154	1206214	12/27	AMBIENT	
10	SPENT CARBON	WATER	91	13154	1206214	12/27	AMBIENT	
11	SPENT CARBON	WATER	91	13154	1206214	12/27	AMBIENT	
12	SPENT CARBON	WATER	91	13154	1206214	12/27	AMBIENT	
13	SPENT CARBON	WATER	91	13154	1206214	12/27	AMBIENT	
14	SPENT CARBON	WATER	91	13154	1206214	12/27	AMBIENT	
15	SPENT CARBON	WATER	91	13154	1206214	12/27	AMBIENT	
16	SPENT CARBON	WATER	91	13154	1206214	12/27	AMBIENT	
17	SPENT CARBON	WATER	91	13154	1206214	12/27	AMBIENT	
18	SPENT CARBON	WATER	91	13154	1206214	12/27	AMBIENT	
19	SPENT CARBON	WATER	91	13154	1206214	12/27	AMBIENT	
20	SPENT CARBON	WATER	91	13154	1206214	12/27	AMBIENT	
21	SPENT CARBON	WATER	91	13154	1206214	12/27	AMBIENT	
22	SPENT CARBON	WATER	91	13154	1206214	12/27	AMBIENT	
23	SPENT CARBON	WATER	91	13154	1206214	12/27	AMBIENT	
24	SPENT CARBON	WATER	91	13154	1206214	12/27	AMBIENT	
25	SPENT CARBON	WATER	91	13154	1206214	12/27	AMBIENT	
26	SPENT CARBON	WATER	91	13154	1206214	12/27	AMBIENT	
27	SPENT CARBON	WATER	91	13154	1206214	12/27	AMBIENT	
28	SPENT CARBON	WATER	91	13154	1206214	12/27	AMBIENT	
29	SPENT CARBON	WATER	91	13154	1206214	12/27	AMBIENT	
30	SPENT CARBON	WATER	91	13154	1206214	12/27	AMBIENT	
31	SPENT CARBON	WATER	91	13154	1206214	12/27	AMBIENT	
32	SPENT CARBON	WATER	91	13154	1206214	12/27	AMBIENT	
33	SPENT CARBON	WATER	91	13154	1206214	12/27	AMBIENT	
34	SPENT CARBON	WATER	91	13154	1206214	12/27	AMBIENT	
35	SPENT CARBON	WATER	91	13154	1206214	12/27	AMBIENT	
36	SPENT CARBON	WATER	91	13154	1206214	12/27	AMBIENT	
37	SPENT CARBON	WATER	91	13154	1206214	12/27	AMBIENT	
38	SPENT CARBON	WATER	91	13154	1206214	12/27	AMBIENT	
39	SPENT CARBON	WATER	91	13154	1206214	12/27	AMBIENT	
40	SPENT CARBON	WATER	91	13154	1206214	12/27	AMBIENT	
41	SPENT CARBON	WATER	91	13154	1206214	12/27	AMBIENT	
42	SPENT CARBON	WATER	91	13154	1206214	12/27	AMBIENT	
43	SPENT CARBON	WATER	91	13154	1206214	12/27	AMBIENT	
44	SPENT CARBON	WATER	91	13154	1206214	12/27	AMBIENT	
45	SPENT CARBON	WATER	91	13154	1206214	12/27	AMBIENT	
46	SPENT CARBON	WATER	91	13154	1206214	12/27	AMBIENT	
47	SPENT CARBON	WATER	91	13154	1206214	12/27	AMBIENT	
48	SPENT CARBON	WATER	91	13154	1206214	12/27	AMBIENT	
49	SPENT CARBON	WATER	91	13154	1206214	12/27	AMBIENT	
50	SPENT CARBON	WATER	91	13154	1206214	12/27	AMBIENT	
51	SPENT CARBON	WATER	91	13154	1206214	12/27	AMBIENT	
52	SPENT CARBON	WATER	91	13154	1206214	12/27	AMBIENT	
53	SPENT CARBON	WATER	91	13154	1206214	12/27	AMBIENT	
54	SPENT CARBON	WATER	91	13154	1206214	12/27	AMBIENT	
55	SPENT CARBON	WATER	91	13154	1206214	12/27	AMBIENT	
56	SPENT CARBON	WATER	91	13154	1206214	12/27	AMBIENT	
57	SPENT CARBON	WATER	91	13154	1206214	12/27	AMBIENT	
58	SPENT CARBON	WATER	91	13154	1206214	12/27	AMBIENT	
59	SPENT CARBON	WATER	91	13154	1206214	12/27	AMBIENT	
60	SPENT CARBON	WATER	91	13154	1206214	12/27	AMBIENT	
61	SPENT CARBON	WATER	91	13154	1206214	12/27	AMBIENT	
62	SPENT CARBON	WATER	91	13154	1206214	12/27	AMBIENT	

THE DATA PRESENTED ABOVE ARE OFFERED TO DESCRIBE A TYPICAL OPERATING CONDITION AND ARE NOT INTENDED TO DEFINE THE FULL RANGE OF FACILITY OPERATING CONDITIONS.



NOTES:

- THIS DRAWING INCLUDES COMPONENTS OF THE FACILITY THAT ARE EXCEPT FROM PERMITTING UNDER VARIOUS PROVISIONS OF RCRA. DATA RELATED TO THESE COMPONENTS IS PROVIDED FOR INFORMATION AND THEY ARE NOT INTENDED TO BECOME REGULATED COMPONENTS OF THE HAZARDOUS WASTE FACILITY.

2523 WUTAHAR STREET, PARKER, AZ 85344

SIEMENS INDUSTRY, INC.

VAPOR PHASE CARBON PROCESS FLOW DIAGRAM BALANCE FOR RF-2

DATE: 1/10/01

SCALE: NONE

PC-1466-PR-003

REV: 2



INSTRUMENT I.D. LETTERS

LETTER	VARIABLE TYPES	FUNCTION CODES
A	ANALYSIS	ALARM
B	BURNER FLAME	BYPASS
C		CONTROLLER
D		DIFFERENTIAL
E	VOLTAGE	ELEMENT (PRIMARY)
F	FLUID	RATIO (FRACTION)
G	GAUGING DIMENSIONS)	GLASS/GAUGE
H	HAND ACTUATED	HIGH
I	CURRENT	INDICATOR
J	POWER (WATTS)	MULTIPOINT STAND
K	TIME	CONTROL STATION
L	LEVEL	LIGHT/LDW
M		MIDDLE
N		
O		DRIFT (RESTRICTION)
P	PRESSURE/VACUUM	POINT
Q	QUANTITY/NUMBER	TOTALIZER
R	RUN	RECORDER
S	SPEED/FREQUENCY	SAFETY/SWITCH
T	TEMPERATURE	TRANSMITTER
U	MULTIVARIABLE	HALF/JUNCTION
V	VIBRATION	VALVE
W	WEIGHT	WELL
X	UNCLASSIFIED	SHUTDOWN/INTERLOCK
Y	EVENT	RELAY
Z	POSITION	DRIVE/ACTUATE

PARKER PERMIT APPLICATION  
DRAWING INDEX

- D1135-200 - LEGEND & SPECIALTY ITEMS
- D1135-201 - SPENT CARBON STORAGE / H-1
- D1135-202 - SPENT CARBON STORAGE / H-2
- D1135-203 - RECYCLE WATER
- D1135-205 - PROCESS WATER DISCHARGE TO POTW
- D1135-211 - UTILITIES - PV - NG - STM
- D1135-213 - FURNACE # 2 FEED SYSTEM
- D1135-214 - REACTIVATION FURNACE # 2
- D1135-215 - FURNACE # 2 PRODUCT HANDLING SYSTEM
- D1135-216 - FURNACE # 2 DPF GAS SCRUBBER
- D1135-217 - FURNACE # 2 PROCESS WATER

INSTRUMENT SYMBOLS

- = PLC I/O
- = OPERATOR INTERFACE
- = INSTRUMENT HARDWIRED SIGNAL
- = INSTRUMENT SOFTWARE INTERCONNECT
- = INSTRUMENT PNEUMATIC SIGNAL
- = INTERLOCK IDENTIFIER
- = FIELD INSTRUMENT
- = PANEL INSTRUMENT ACCESSIBLE TO OPERATOR
- = PANEL INSTRUMENT NOT NORMALLY ACCESSIBLE TO OPERATOR

NOTE:  
THIS DRAWING INCLUDES COMPONENTS OF THE FACILITY THAT ARE EXEMPT FROM PERMITTING UNDER VARIOUS PROVISIONS OF RORA. DATA RELATED TO THESE COMPONENTS IS PROVIDED FOR INFORMATIONAL PURPOSES AND EASE OF REVIEW ONLY, AND THEY ARE NOT INTENDED TO BECOME REGULATED COMPONENTS OF THE HAZARDOUS WASTE FACILITY.

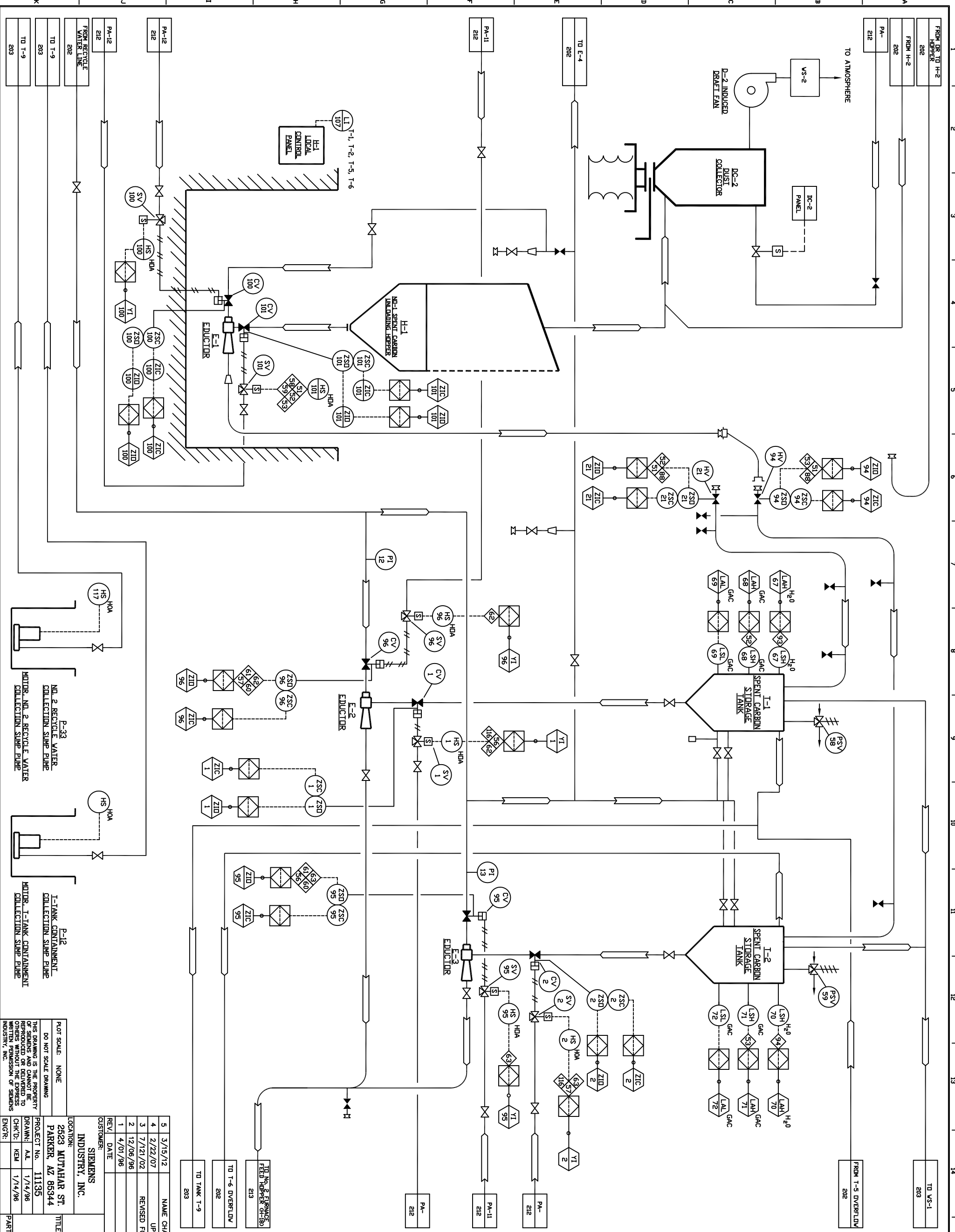
REV.	DATE	REVISION DESCRIPTION	DRAWN	CHK'D	ENGR
5	3/15/12	NAME CHANGED TO SIEMENS INDUSTRY, INC.	JBE	KEM	
4	2/22/07	UPDATED FOR PERMIT SUBMITTAL	JBE	KEM	
3	7/17/02	REVISED FOR RORA PART B PERMIT APPLICATION	STA	KEM	
2	7/17/96	AS BUILT	CHJ		
1	3/27/96	GENERAL REVISIONS	ALL	KEM	

CUSTOMER: SIEMENS INDUSTRY, INC.		SIEMENS INDUSTRY, INC.	
LOCATION: 2523 MUTAHAR ST. PARKER, AZ 85344		Parker, AZ	
PROJECT No. 11135	TITLE: REACTIVATION FACILITY LEGEND & SPECIALTY ITEMS PIPING & INSTRUMENTATION DIAGRAM	PART No.	DWG No. D11135-200
DRAWN: AAL 1/02/96			REV. 5
CHK'D: KEM 1/02/96			
ENGR:			

INTERLOCK NOTES

- 51 = TRANSFER FROM H-1 TO T-1, 2, 5, OR 6; EITHER HV-21, HV-94, HV-33, OR HV-23 MUST BE OPEN FOR CV-101 TO OPEN.
- 52 = SLURRY TRANSFER FROM H-1 OR H-2 TO T-1 IS PREVENTED IF CARBON LEVEL REACHES LSH-68.
- 53 = SLURRY TRANSFER FROM H-1 OR H-2 TO T-2 IS PREVENTED IF CARBON LEVEL REACHES LSH-71.
- 54 = PREVENTION OF DOUBLE SLURRY FROM T-1: CV-1 WILL BE HELD SHUT IF CV-95, CV-24, OR CV-97 ARE OPEN.
- 57 = PREVENTION OF DOUBLE SLURRY FROM T-2: CV-2 WILL BE HELD SHUT IF CV-96, CV-24, OR CV-97 ARE OPEN.
- 58 = SEE NOTE ON DWG. 202
- 59 = SEE NOTE ON DWG. 202
- 60 = SEE NOTE ON DWG. 202
- 61 = SEE NOTE ON DWG. 202
- 68 = SEE NOTE ON DWG. 202.
- 119 = SEE NOTE ON DWG. 213.

NOTE:  
THIS DRAWING INCLUDES COMPONENTS OF THE FACILITY THAT ARE EXEMPT FROM PERMITTING UNDER HAZARDOUS WASTE REGULATIONS. THESE COMPONENTS ARE PROVIDED FOR INFORMATIONAL PURPOSES AND EASE OF REVIEW ONLY, AND THEY ARE NOT INTENDED TO BECOME REGULATED COMPONENTS OF THE HAZARDOUS WASTE FACILITY.



1	DATE	DESCRIPTION	DRAWN	CHK'D	ENGR
1	4/01/96	GENERAL REVISIONS	A.L.	KEM	
2	12/06/96	AS BUILT	TGB	KEM	
3	7/12/02	REVISED FOR RCRA PART B PERMIT APPLICATION	JBE	KEM	
4	2/22/07	UPDATED FOR PERMIT SUBMITTAL	JBE	KEM	
5	3/15/12	NAME CHANGED TO SIEMENS INDUSTRY, INC.	JBE	KEM	

CUSTOMER:	SIEMENS INDUSTRY, INC.
LOCATION:	2523 MUTAHAR ST. PARKER, AZ 85344
PROJECT No.	11135
DRAWN:	A.L.
CHK'D:	KEM
ENGR:	1/14/96

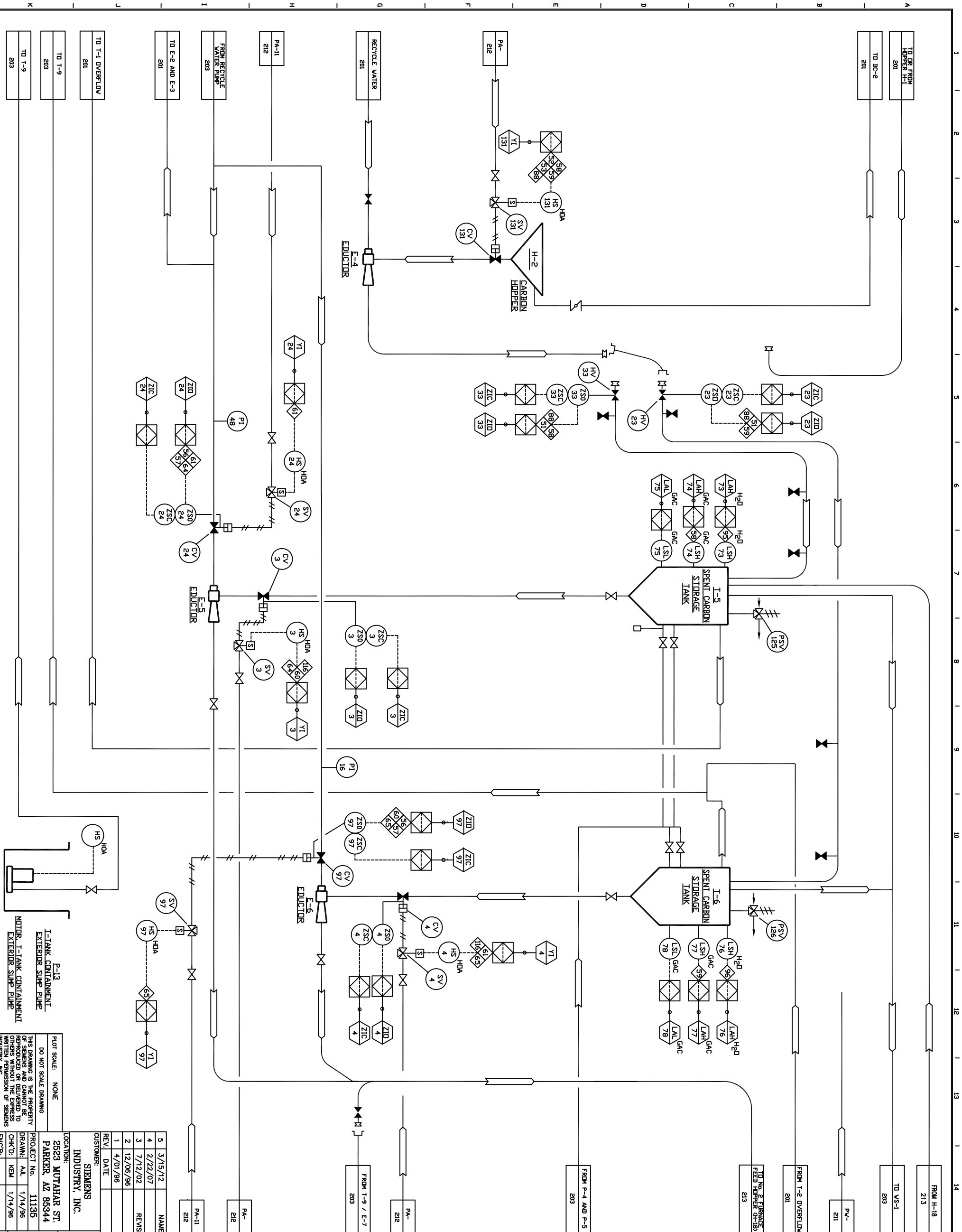
TITLE:	REACTIVATION FACILITY H-1 SPENT CARBON STORAGE / PIPING & INSTRUMENTATION DIAGRAM
PART No.	
DWG No.	D11135-201
REV	5



INTERLOCK NOTES

- 51) = SEE NOTE ON DWG. 201
- 52) = SEE NOTE ON DWG. 201
- 53) = SEE NOTE ON DWG. 201
- 56) = SEE NOTE ON DWG. 201
- 57) = SEE NOTE ON DWG. 201
- 58) = SLURRY TRANSFER FROM H-1 OR H-2 TO T-5 IS PREVENTED IF CARBON LEVEL REACHES LSH-74.
- 59) = SLURRY TRANSFER FROM H-1 OR H-2 TO T-6 IS PREVENTED IF CARBON LEVEL REACHES LSH-77.
- 60) = PREVENTION OF DOUBLE SLURRY FROM T-5; CV-3 WILL BE HELD SHUT IF CV-95, CV-96, OR CV-97 ARE OPEN.
- 61) = PREVENTION OF DOUBLE SLURRY FROM T-6; CV-4 WILL BE HELD SHUT IF CV-95, CV-96, OR CV-24 ARE OPEN.
- 68) = TRANSFER FROM H-2 TO T-1, 2, 5, OR 6; EITHER HV-21, HV-94, HV-33, OR HV-23 MUST BE OPEN FOR CV-131 TO OPEN.
- 118) = SEE NOTE ON DWG. 213.

**NOTE:**  
 THIS DRAWING INCLUDES COMPONENTS OF THE FACILITY THAT ARE EXEMPT FROM PERMITTING UNDER VARIOUS PROVISIONS OF RCRA. DATA RELATED TO THESE COMPONENTS IS PROVIDED FOR INFORMATIONAL PURPOSES AND ENGINEERING, OPERATION, AND MAINTENANCE TO BECOME REGULATED COMPONENTS OF THE HAZARDOUS WASTE FACILITY.

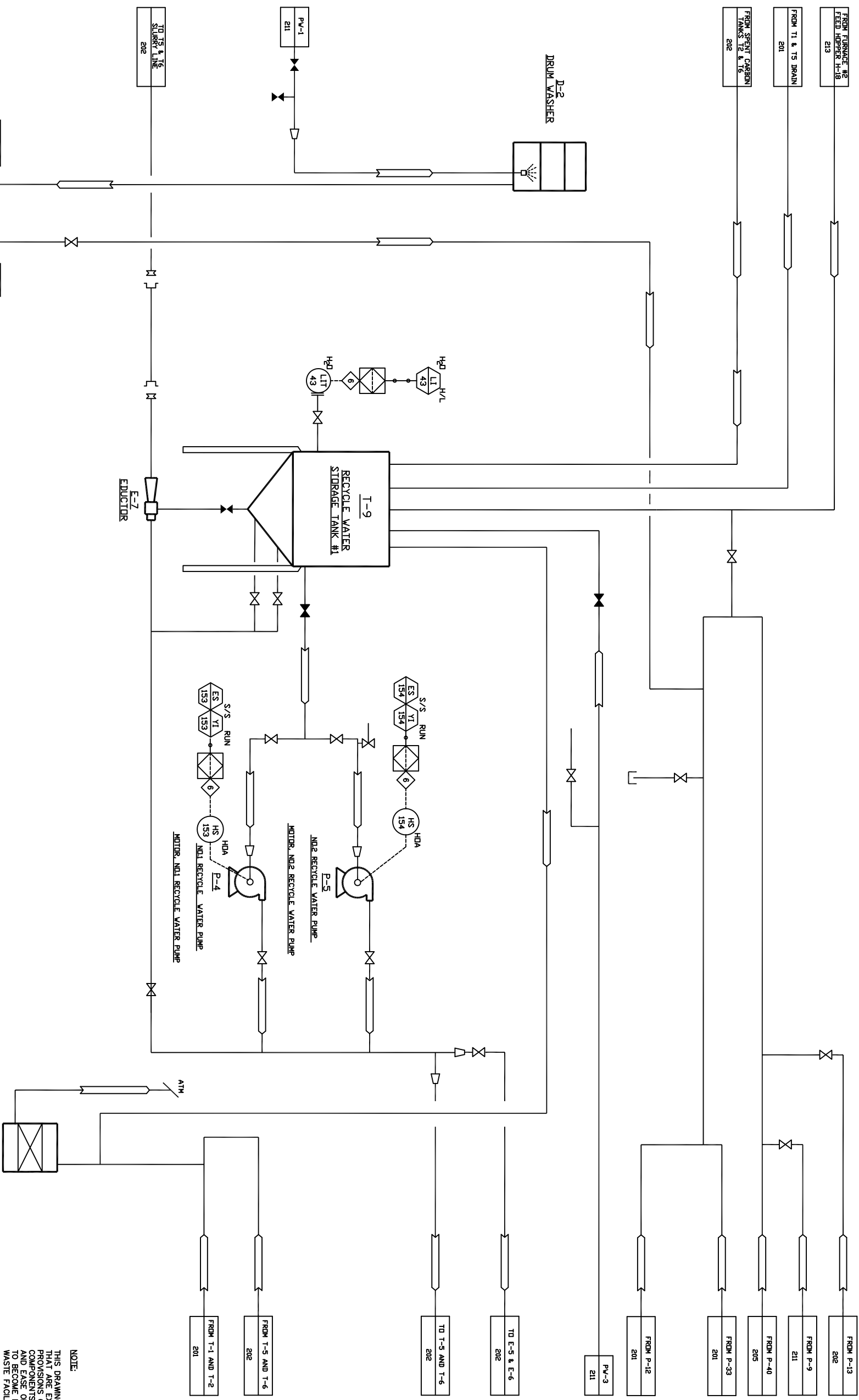


5	3/15/12	NAME CHANGED TO SIEMENS INDUSTRY, INC.	JBE	KEM
4	2/22/07	UPDATED FOR PERMIT SUBMITTAL	JBE	KEM
3	7/12/02	REVISED FOR RCRA PART B PERMIT APPLICATION	STA	KEM
2	12/06/96	AS BUILT	TGB	
1	4/01/96	GENERAL REVISIONS	A.L.	KEM
REV.	DATE	REVISION DESCRIPTION	DRAWN	CHK'D
CUSTOMER: SIEMENS INDUSTRY, INC.				
LOCATION: 2523 MUTAHAR ST. PARKER, AZ 85344				
PROJECT No. 11135				
DRAWN: A.L. 1/14/96				
CHK'D: KEM 1/14/96				
ENGR: [ ]				
TITLE: SIEMENS INDUSTRY, INC. Parker, AZ			PART No. [ ]	
REACTIVATION FACILITY SPENT CARBON STORAGE / H-2 PIPING & INSTRUMENTATION DIAGRAM			DWG No. D1135-202	
			REV. 5	

PLOT SCALE: NONE  
 DO NOT SCALE DRAWING  
 THIS DRAWING IS THE PROPERTY OF SIEMENS AND NOT BE LOANED, REPRODUCED OR DELIVERED TO OTHERS WITHOUT THE EXPRESS WRITTEN PERMISSION OF SIEMENS INDUSTRY, INC.

INTERLOCK NOTES

◊ = RECYCLE WATER PUMPS P-4 AND P-5 WILL STOP WHEN LEVEL IN T-9 IS LESS THAN 10% (12 INCHES).



**NOTE:**  
 THIS DRAWING INCLUDES COMPONENTS OF THE FACILITY THAT ARE EXEMPT FROM PERMITTING UNDER VARIOUS PROVISIONS OF RCRA. DATA RELATED TO THESE COMPONENTS IS PROVIDED FOR INFORMATIONAL PURPOSES AND EASE OF REVIEW ONLY, AND THEY ARE NOT INTENDED TO BECOME REGULATED COMPONENTS OF THE HAZARDOUS WASTE FACILITY.

REV.	DATE	REVISION DESCRIPTION	DRAWN	CHK'D	ENGR
5	3/15/12	NAME CHANGED TO SIEMENS INDUSTRY, INC.	JBE	KEM	
4	2/22/07	UPDATED FOR PERMIT SUBMITTAL	JBE	KEM	
3	7/16/02	REVISED FOR RCRA PART B PERMIT APPLICATION AS BUILT	STA	KEM	
2	12/06/96	GENERAL REVISIONS	TGB		
1	4/02/96	GENERAL REVISIONS	ALL	KEM	

**CUSTOMER:** SIEMENS INDUSTRY, INC.  
**LOCATION:** 2523 MUTAHAR ST. PARKER, AZ 85344

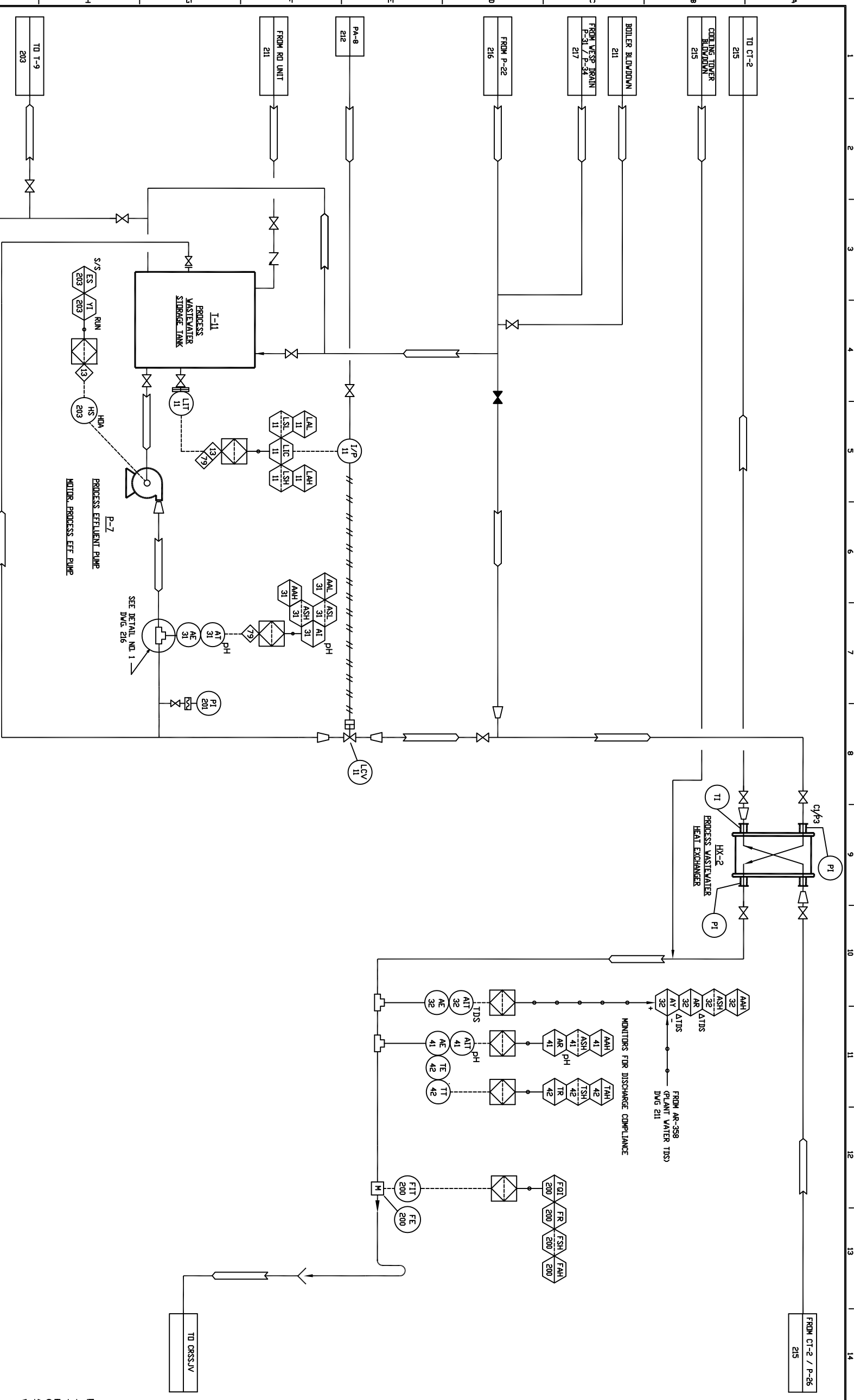
**TITLE:** REACTIVATION FACILITY RECYCLE WATER PIPING & INSTRUMENTATION DIAGRAM

PROJECT No.	11135	PART No.	D11135-203
DRAWN:	AAL	1/02/96	REV 5
CHK'D:	KEM	1/02/96	
ENGR:			

**INTERLOCK NOTES**

⑬ = WHEN LEVEL IN TANK T-11 REACHES ONE FOOT, PUMP P-7 WILL SHUT-OFF.

⑰ = PH OUT OF RANGE CLOSES LCV-11, UNLESS LSH-11 IS HIGH.

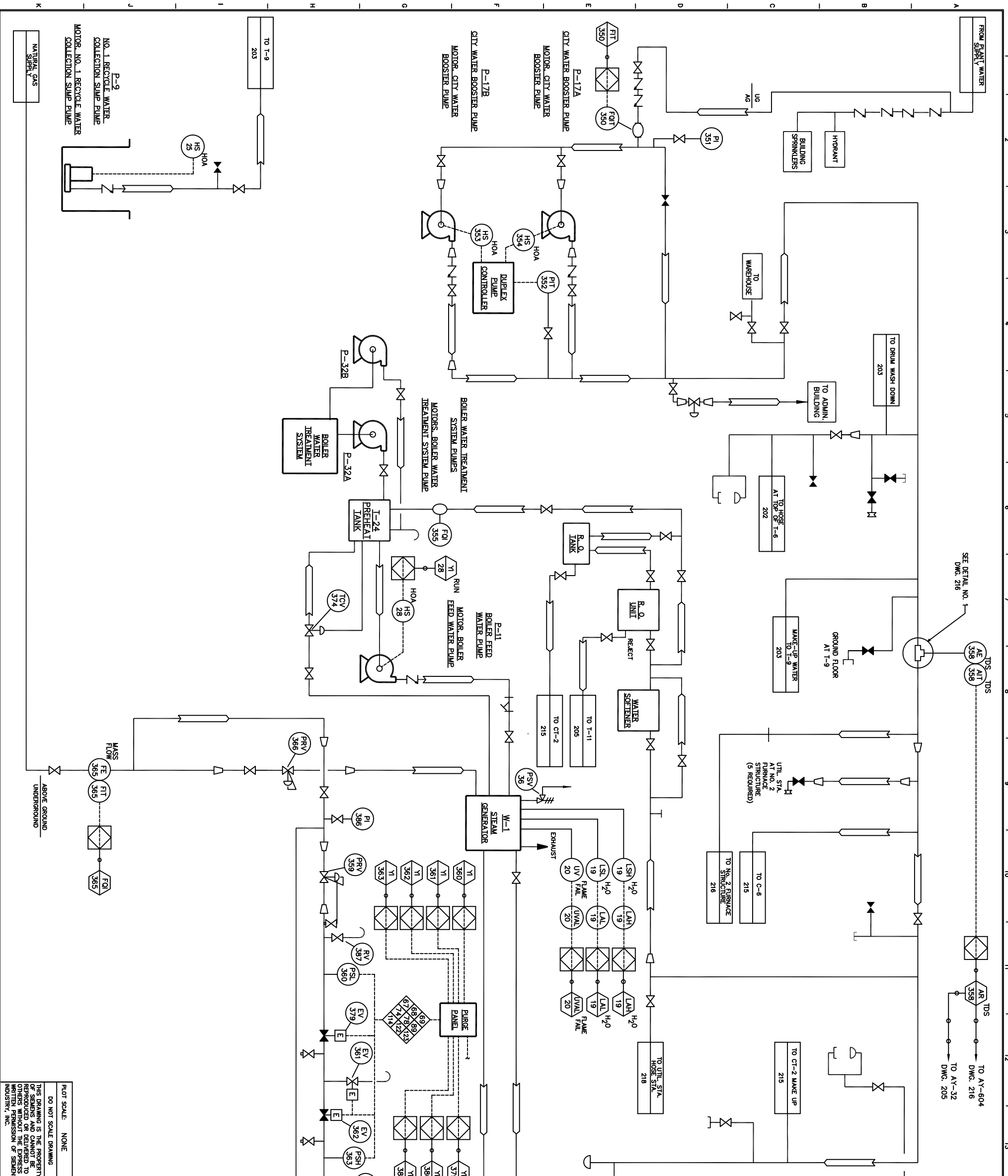


**NOTE:**  
 THIS DRAWING INCLUDES COMPONENTS OF THE FACILITY THAT ARE EXEMPT FROM PERMITTING UNDER VARIOUS PROVISIONS OF RCRA. DATA RELATED TO THESE COMPONENTS IS PROVIDED FOR INFORMATIONAL PURPOSES AND EASE OF REVIEW ONLY, AND THEY ARE NOT INTENDED TO BECOME REGULATED COMPONENTS OF THE HAZARDOUS WASTE FACILITY.

REV.	DATE	DESCRIPTION	DRAWN	CHK'D	ENGR
5	3/15/12	NAME CHANGED TO SIEMENS INDUSTRY, INC.	JBE	KEM	
4	2/22/07	UPDATED FOR PERMIT SUBMITTAL	JBE	KEM	
3	7/17/02	REVISED FOR RCRA PART B PERMIT APPLICATION	STA	KEM	
2	12/06/96	AS BUILT	TGB		
1	4/01/96	DELETED EFFLUENT LIFT STATION, GENERAL REVISIONS	A.L.	KEM	

<b>CUSTOMER:</b> SIEMENS INDUSTRY, INC.		<b>TITLE:</b> REACTIVATION FACILITY PROCESS WATER DISCHARGE TO POTW PIPING & INSTRUMENTATION DIAGRAM	
<b>LOCATION:</b> 2523 MUTAHAR ST. PARKER, AZ 85344		<b>PART No.:</b> D11135-205	
<b>PROJECT No.:</b> 11135		<b>DWG No.:</b> D11135-205	
<b>DRAWN:</b> AMW 1/14/96		<b>REV.:</b> 5	
<b>CHK'D:</b> KEM 1/14/96		<b>ENG'R:</b>	
<b>PLLOT SCALE:</b> NONE		<b>DO NOT SCALE DRAWING</b>	
THIS DRAWING IS THE PROPERTY OF SIEMENS INDUSTRY, INC. AND IS NOT TO BE REPRODUCED OR DELIVERED TO OTHERS WITHOUT THE EXPRESS WRITTEN PERMISSION OF SIEMENS INDUSTRY, INC.			



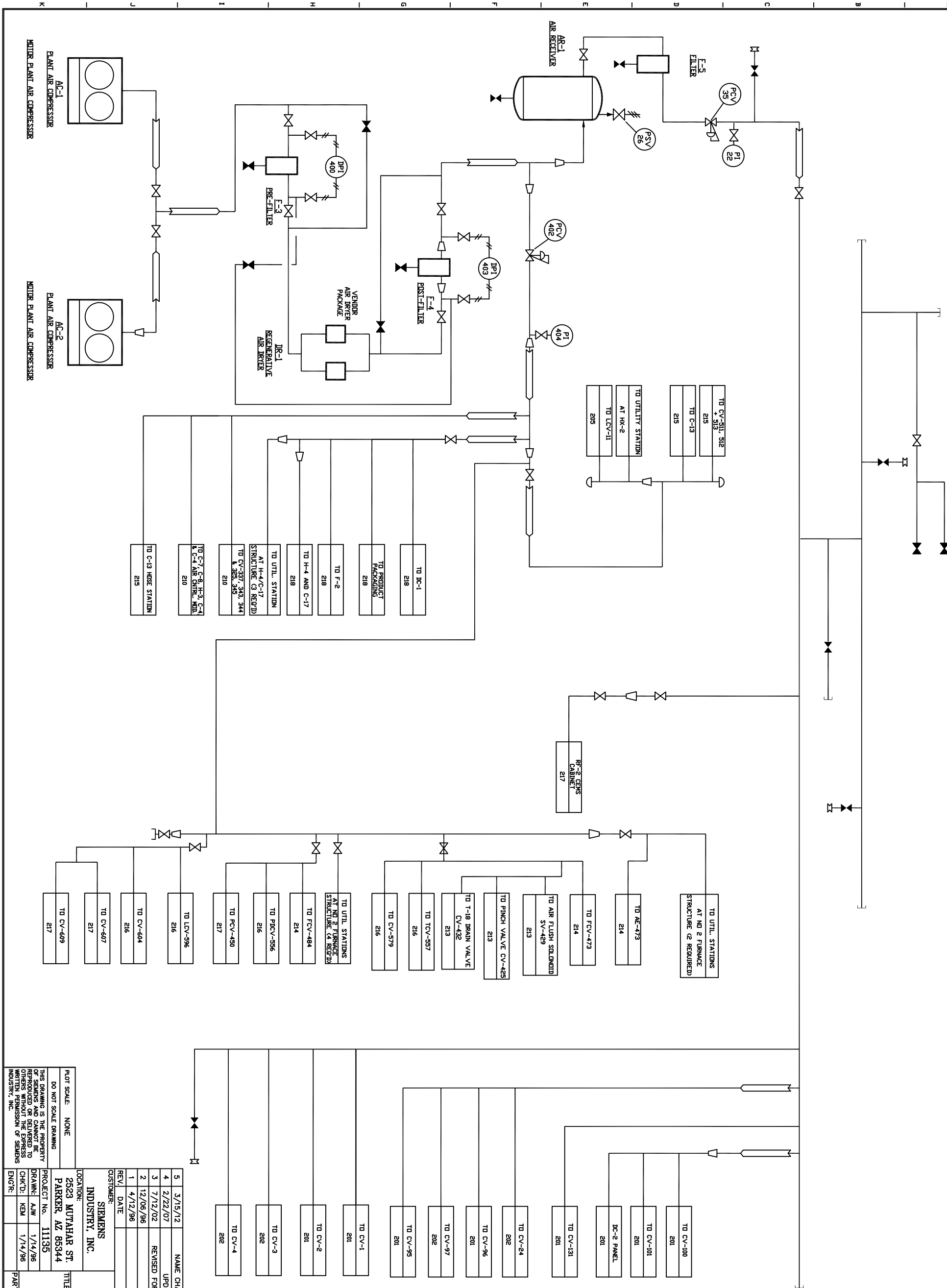


- INTERLOCK NOTES**
- 67 = BURNER PERMISSIVE. BURNER SYSTEM SHUT-DOWN UPON HIGH OR LOW GAS PRESSURE AT UTILITY HEADER ON PSL-360 OR PSH-363 INITIATES RF-2 SHUT-DOWN INTERLOCK 121, (SEE NOTE ON DWG. 214).
  - 69 = SEE NOTE ON DWG. 214.
  - 69 = SEE NOTE ON DWG. 214.
  - 74 = SEE NOTE ON DWG. 214.
  - 78 = SEE NOTE ON DWG. 214.
  - 89 = SEE NOTE ON DWG. 214.
  - 114 = SEE NOTE ON DWG. 214.
  - 122 = SEE NOTE ON DWG. 214.
  - 123 = SEE NOTE ON DWG. 216.

**NOTE:**  
 THIS DRAWING INCLUDES COMPONENTS OF THE FACILITY THAT ARE EXEMPT FROM PERMITTING UNDER VARIOUS PROVISIONS OF RCRA. DATA RELATED TO THESE COMPONENTS IS PROVIDED FOR INFORMATIONAL PURPOSES AND EASE OF REVIEW ONLY, AND THEY ARE NOT INTENDED TO BECOME REGULATED COMPONENTS OF THE HAZARDOUS WASTE FACILITY.

PROJECT NO. 11135		DATE 3/15/12	
DRAWING A.L. 1/14/96		DATE 2/22/07	
CHK'D: KEM 1/14/96		DATE 7/17/02	
ENGR: KEM		DATE 12/06/96	
REV. 1 4/12/96		DATE 4/12/96	
REV. 2 12/06/96		DATE 12/06/96	
REV. 3 7/17/02		DATE 7/17/02	
REV. 4 2/22/07		DATE 2/22/07	
REV. 5 3/15/12		DATE 3/15/12	
CUSTOMER: SIEMENS INDUSTRY, INC.		NAME CHANGED TO SIEMENS INDUSTRY, INC.	
LOCATION: 2523 WUTAHAR ST. PARKER, AZ 85344		UPDATED FOR PERMIT SUBMITTAL	
TITLE: REACTIVATION FACILITY UTILITIES - NG - PW - STM PIPING & INSTRUMENTATION DIAGRAM		REVISED FOR RCRA PART B PERMIT APPLICATION AS BUILT	
PART NO. DWG No. D11135-211		GENERAL REVISIONS	
REV. 5		REVISION DESCRIPTION	
		DRAWN: KEM	
		CHK'D: ENGR	
		DATE	
		JOB	
		STA	
		TGB	
		KEM	
		KEM	
		KEM	

INTERLOCK NOTES



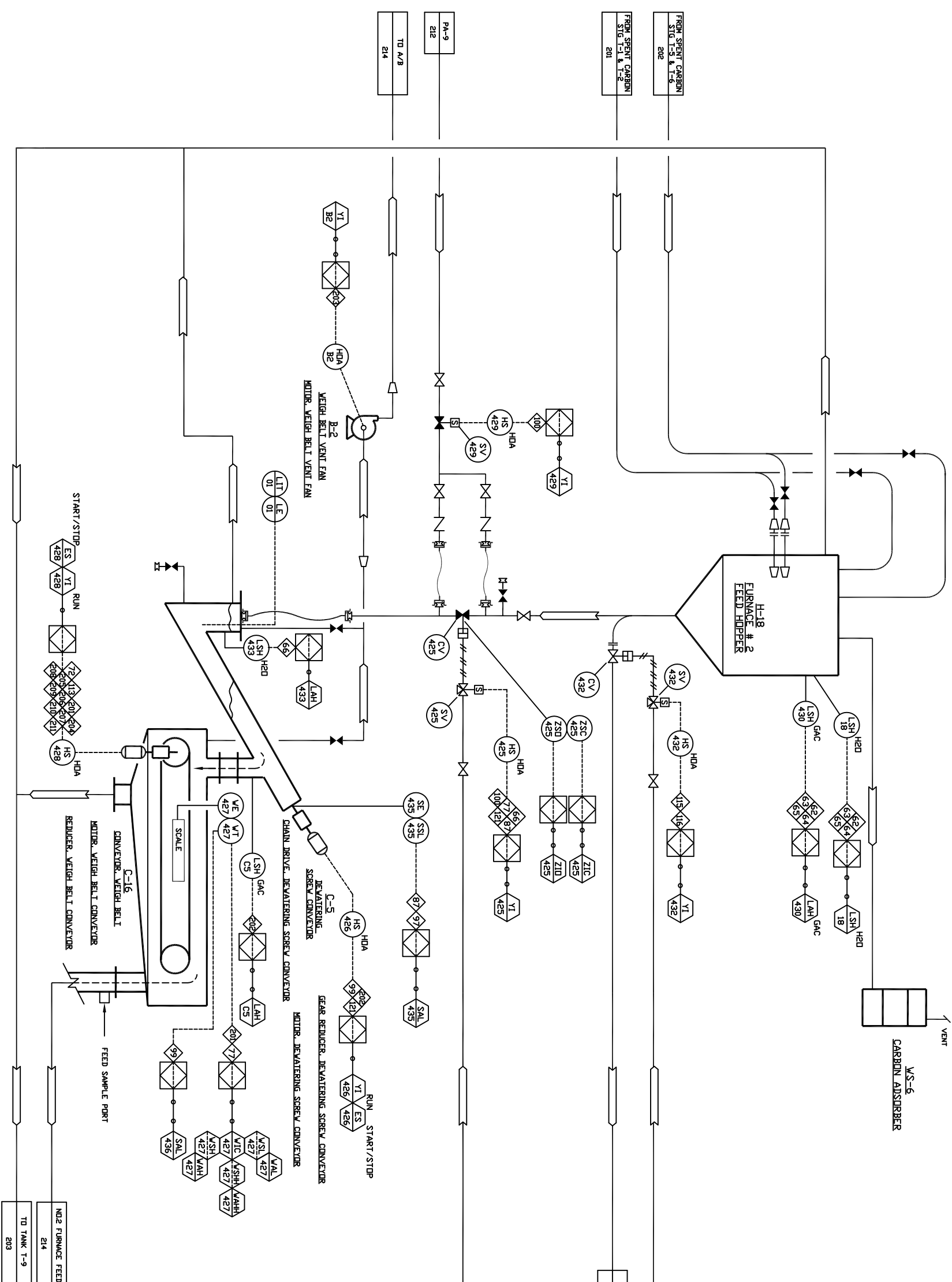
REV.	DATE	DESCRIPTION	DRAWN	CHK'D	ENGR
5	3/15/12	NAME CHANGED TO SIEMENS INDUSTRY, INC.	JBE	KEM	
4	2/22/07	UPDATED FOR PERMIT SUBMITTAL	JBE	KEM	
3	7/12/02	REVISED FOR RORA PART B PERMIT APPLICATION AS BUILT	STA	KEM	
2	12/06/96	GENERAL REVISIONS	TGB		
1	4/12/96	GENERAL REVISIONS	ALL	KEM	

CUSTOMER:	SIEMENS INDUSTRY, INC.
LOCATION:	2523 MUTAHAR ST. PARKER, AZ 85344
PROJECT No.:	11135
DRAWN:	AWW
CHK'D:	KEM
ENGR:	1/14/96

TITLE:	REACTIVATION FACILITY UTILITIES - COMPRESSED AIR PIPING & INSTRUMENTATION DIAGRAM
PART No.:	
DWG No.:	D11135-212
REV.:	5



**INTERLOCK NOTES**

- 68 = HIGH WATER LEVEL IN C-5: WHEN THE WATER LEVEL IN THE DEMATERING SCREEN REACHES LSH-433, CV-425 IS HELD SHUT.
- 72 = LOW-LOW AFTERBURNER TEMPERATURE ON SELECTED TSSL-463, 464, OR 466 DISABLES C-16 AND STOPS FEED TO RF-2.
- 77 = FEED RATE CONTROL: WHEN THE FEED RATE VARIES OUT OF RANGE, WIC-427 ALTERS THE TIME THAT CV-425 IS OPEN.
- 87 = CV-425 IS HELD SHUT WHEN C-5 IS NOT RUNNING.
- 97 = SEE NOTE ON DWG. 203.
- 99 = C-5 IS DISABLED UNLESS C-16 IS RUNNING.
- 100 = SV-429 OPENS FOR 3 SECOND DURATION TO FLUSH LINE PRIOR TO CV-425 OPENING AND AFTER CV-425 CLOSES.
- 113 = C-16 IS DISABLED UNLESS RF-2 ROTARY AIRLOCK AND CENTER SHAFT ARE RUNNING.
- 119 = RF-2 CENTER SHAFT STOPPED ON SSL-458 FOR GREATER THAN 30 MINUTES OPENS CV-432 TO DRAIN RF-2 FEED HOPPER H-18.
- 119 = CARBON SLURRY TRANSFER TO H-18 FROM T-1, T-2, T-5 AND T-6 IS DISABLED IF CV-432 IS OPEN.
- 121 = SEE NOTE ON DWG. 214.
- 201 = HIGH-HIGH SPENT CARBON FEED RATE ON WSHH-427 DISABLES C-16 AND STOPS FEED TO RF-2.
- 202 = WHEN CARBON LEVEL IN C-5 DROP CHUTE REACHES LSH-C5, C5 IS STOPPED. RESTART AFTER CONDITION IS CLEARED BY OPERATOR.
- 203 = I.D. FAN B-15 MUST BE RUNNING FOR B-2 TO RUN IN AUTO. STOPS IF B-15 SHUTS OFF.
- 204 = LOW-LOW VENTURI SCRUBBER DIFFERENTIAL PRESSURE ON PDL-556 DISABLES C-16 AND STOPS FEED TO RF-2.
- 205 = LOW-LOW QUENCH/VENTURI TOTAL LIQUID FLOW RATE ON FSL-562 DISABLES C-16 AND STOPS FEED TO RF-2.
- 206 = LOW-LOW PACKED BED SCRUBBER PH ON ASLL-590 DISABLES C-16 AND STOPS FEED TO RF-2.
- 207 = LOW-LOW PACKED BED SCRUBBER LIQUID FLOW RATE ON FSL-552 DISABLES C-16 AND STOPS FEED TO RF-2.
- 208 = LOW-LOW WET SCRUBBER BLOWDOWN RATE ON FSL-605 DISABLES C-16 AND STOPS FEED TO RF-2.
- 209 = LOW-LOW WESP SECONDARY VOLTAGE ON ESLL-558 DISABLES C-16 AND STOPS FEED TO RF-2.
- 210 = HIGH-HIGH STACK GAS FLOW RATE ON FSHH-700 DISABLES C-16 AND STOPS FEED TO RF-2.
- 211 = HIGH-HIGH STACK GAS CARBON MONOXIDE CONCENTRATION ON ASHH-575 DISABLES C-16 AND STOPS FEED TO RF-2.

NOTE:  
THIS DRAWING INCLUDES COMPONENTS OF THE FACILITY THAT ARE EXEMPT FROM PERMITTING UNDER VARIOUS PROVISIONS OF RCRA. DATA RELATED TO THESE COMPONENTS IS PROVIDED FOR INFORMATIONAL PURPOSES AND EASE OF REVIEW ONLY, AND THEY ARE NOT INTENDED TO BECOME REGULATED COMPONENTS OF THE HAZARDOUS WASTE FACILITY.

REV.	DATE	DESCRIPTION	DRAWN	CHK'D	ENGR
5	3/15/12	NAME CHANGED TO SIEMENS INDUSTRY, INC.	JBE	KEM	
4	2/22/07	UPDATED FOR PERMIT SUBMITTAL	JBE	KEM	
3	7/12/02	REVISED FOR RORA PART B PERMIT APPLICATION AS BUILT	STA	KEM	
2	12/06/96	GENERAL REVISIONS	TGB		
1	4/01/96	GENERAL REVISIONS	ALL	KEM	

SIEMENS INDUSTRY, INC.	
LOCATION:	2523 MUTAHAR ST. PARKER, AZ 85344
PROJECT NO.:	11135
DRAWN:	ALL
CHK'D:	KEM
ENGR:	1/14/96

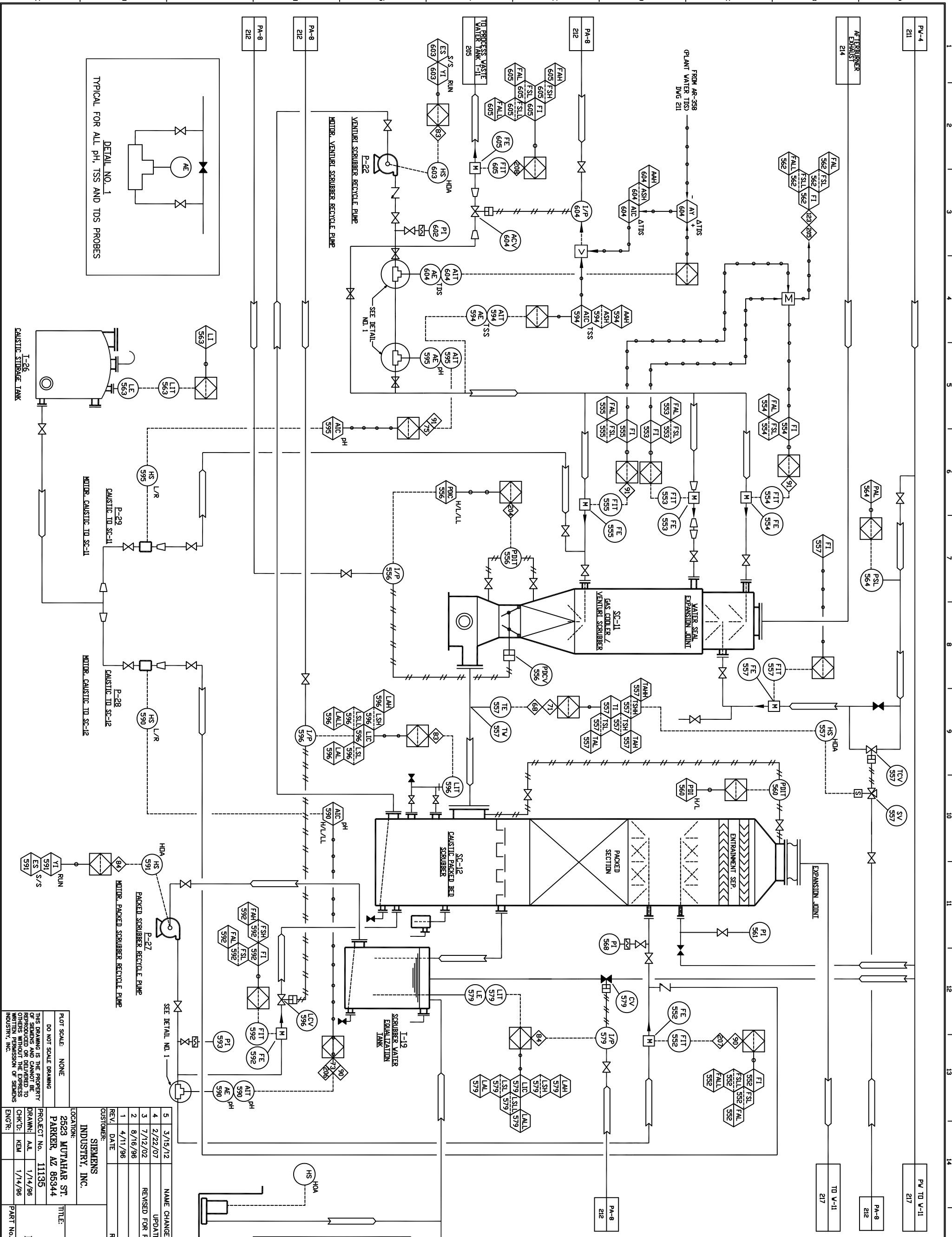
  

SIEMENS INDUSTRY, INC.	
Parker, AZ	
REACTIVATION FACILITY	
FURNACE # 2 FEED SYSTEM	
PIPING & INSTRUMENTATION DIAGRAM	
PART NO.	DWG No. D11135-213
REV.	5









**INTERLOCK NOTES**

- 68 = SEE NOTE ON DWG. 214.
- 71 = TCV-557 OPENS UPON HIGH-HIGH SCRUBBER GAS TEMPERATURE ON TSHH-557.
- 73 = LOW pH TURNS ON CAUSTIC PUMP P-28. HIGH pH TURNS OFF P-28.
- 75 = LOW pH TURNS ON CAUSTIC PUMP P-29 HIGH pH TURNS OFF P-29.
- 83 = P-22 IS DISABLED UPON LOW-LOW LEVEL IN SC-12 ON LSSL-596.
- 84 = P-27 IS DISABLED UPON LOW-LOW LEVEL IN T-19 ON LSSL-579.
- 90 = FI-552 MUST SHOW FLOW TO ENABLE CAUSTIC PUMP P-28.
- 91 = BOTH FI-554 AND FI-555 MUST SHOW FLOW TO ENABLE CAUSTIC PUMP P-29.
- 123 = BURNER PERMISSIVE. BURNER SYSTEM SHUT-DOWN UPON LOW-LOW SCRUBBER WATER FLOW FOR 5 MINUTES ON FSSL-562 INITIATES RF-2 SHUT-DOWN INTERLOCK 121.
- 200 = SEE NOTE ON DWG. 213.
- 205 = SEE NOTE ON DWG. 213.
- 207 = SEE NOTE ON DWG. 213.
- 208 = SEE NOTE ON DWG. 213.

**NOTE:**  
 THIS DRAWING INCLUDES COMPONENTS OF THE FACILITY THAT ARE EXEMPT FROM PERMITTING UNDER VARIOUS PROVISIONS OF RCRA. DATA RELATED TO THESE COMPONENTS IS PROVIDED FOR INFORMATIONAL PURPOSES AND EASE OF REVIEW ONLY, AND THEY ARE NOT INTENDED TO BECOME REGULATED COMPONENTS OF THE HAZARDOUS WASTE FACILITY.

REV.	DATE	DESCRIPTION	DRAWN	CHK'D	ENGR
1	4/11/96	GENERAL REVISIONS	A.L.	KEM	
2	8/16/96	AS BUILT	CHU	KEM	
3	7/12/02	REVISED FOR RCRA PART B PERMIT APPLICATION	STA	KEM	
4	2/22/07	UPDATED FOR PERMIT SUBMITTAL	JBE	KEM	
5	3/15/12	NAME CHANGED TO SIEMENS INDUSTRY, INC.	JBE	KEM	

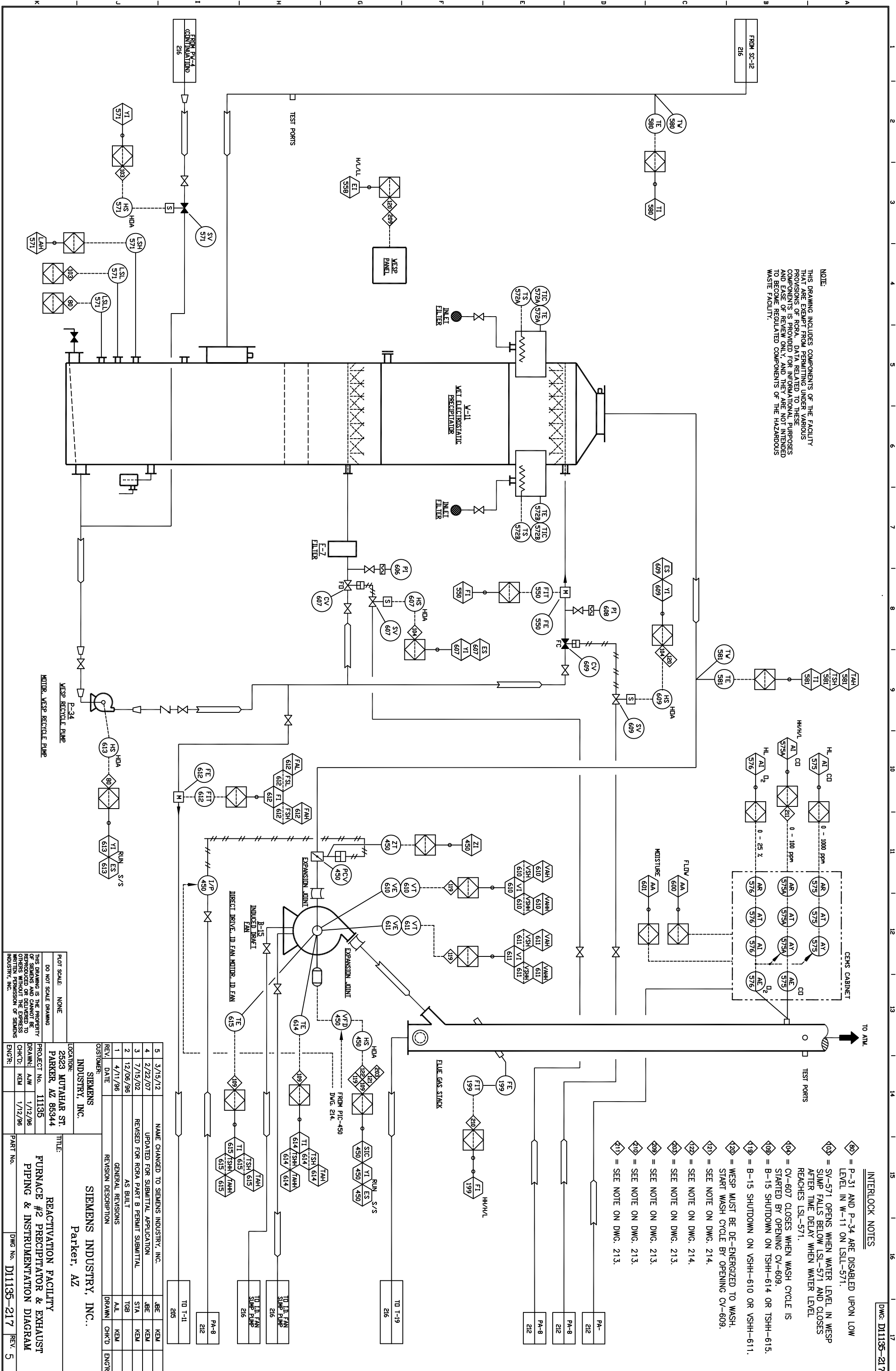
  

LOCATION:	2523 AUTAHAR ST. PARKER, AZ 85344
PROJECT No.	11135
DRAWN:	A.L.
CHK'D:	KEM
ENGR:	

TITLE:	REACTIVATION FACILITY FURNACE #2 OFF GAS SCRUBBER PIPING & INSTRUMENTATION DIAGRAM
CUSTOMER:	SIEMENS INDUSTRY, INC. Parker, AZ
FROM STACK DRAIN	217
FROM I.D. FAN DRAIN	217
FROM I.D. FAN DRAIN	217
FROM STEAM TRAPS	214

NOTE:  
 THIS DRAWING INCLUDES COMPONENTS OF THE FACILITY THAT ARE EXEMPT FROM RCRA. DATA RELATED TO THESE PROVISIONS OF RCRA. DATA RELATED TO THESE COMPONENTS IS PROVIDED FOR INFORMATIONAL PURPOSES AND EASE OF REVIEW ONLY, AND THEY ARE NOT INTENDED TO BECOME REGULATED COMPONENTS OF THE HAZARDOUS WASTE FACILITY.



- INTERLOCK NOTES
- ◊80 = P-31 AND P-34 ARE DISABLED UPON LOW LEVEL IN W-11 ON LSL-571.
  - ◊103 = SV-571 OPENS WHEN WATER LEVEL IN WESP SUMP FALLS BELOW LSL-571 AND CLOSERS AFTER TIME DELAY WHEN WATER LEVEL REACHES LSL-571.
  - ◊104 = CV-607 CLOSERS WHEN WASH CYCLE IS STARTED BY OPENING CV-609.
  - ◊109 = B-15 SHUTDOWN ON TSHH-614 OR TSHH-615.
  - ◊119 = B-15 SHUTDOWN ON VSHH-610 OR VSHH-611.
  - ◊120 = WESP MUST BE DE-ENERGIZED TO WASH. START WASH CYCLE BY OPENING CV-609.
  - ◊121 = SEE NOTE ON DWG. 214.
  - ◊122 = SEE NOTE ON DWG. 214.
  - ◊203 = SEE NOTE ON DWG. 213.
  - ◊209 = SEE NOTE ON DWG. 213.
  - ◊210 = SEE NOTE ON DWG. 213.
  - ◊211 = SEE NOTE ON DWG. 213.

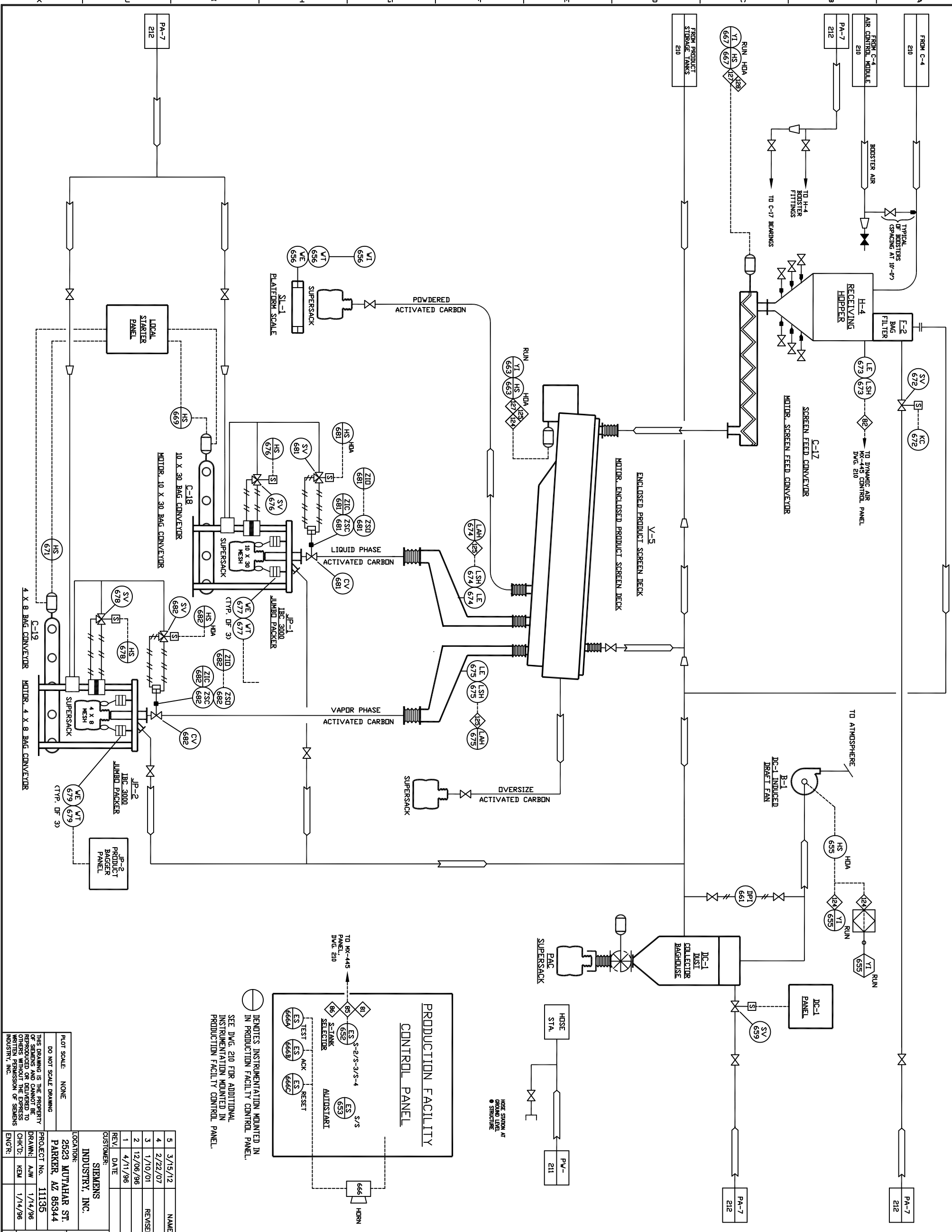
REV.	DATE	REVISION DESCRIPTION	DRAWN	CHK'D	ENGR
5	3/15/12	NAME CHANGED TO SIEMENS INDUSTRY, INC.	JBE	KEM	
4	2/22/07	UPDATED FOR SUBMITTAL APPLICATION	JBE	KEM	
3	7/15/02	REVISED FOR RCRA PART B PERMIT SUBMITTAL	STA	KEM	
2	12/06/96	AS BUILT	TGB		
1	4/11/96	GENERAL REVISIONS	ALE	KEM	

CUSTOMER:	SIEMENS INDUSTRY, INC.
LOCATION:	2523 MUTAHAR ST. PARKER, AZ 85344
PROJECT No.:	11135
DRAWN:	AWW
CHK'D:	KEM
ENGR:	1/12/96

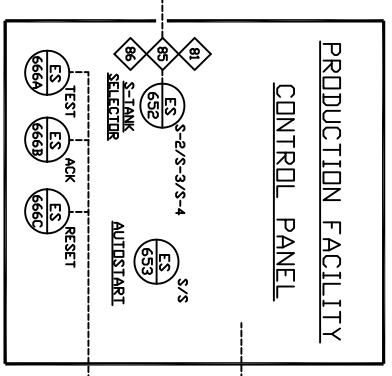
  

TITLE:	REACTIVATION FACILITY FURNACE #2 PRECIPITATOR & EXHAUST PIPING & INSTRUMENTATION DIAGRAM
PART No.:	
DWG No.:	D11135-217
REV.:	5



**INTERLOCK NOTES**

- 81 = SEE NOTE ON DWG. 210.
- 82 = SEE NOTE ON DWG. 210.
- 85 = SEE NOTE ON DWG. 210.
- 86 = SEE NOTE ON DWG. 210.
- 124 = B-1 MUST BE RUNNING TO ENABLE SCREEN DECK V-5, JP-1, JP-2, AND CARBON TRANSPORT FROM C-4 TO H-4.
- 125 = HIGH CARBON LEVEL IN PRODUCT CHUTES ON LSH-674 OR LSH-675 STOPS V-5.
- 127 = V-5 MUST BE RUNNING TO ENABLE C-17.
- 129 = PRODUCTION FACILITY AUTO-START.



○ DENOTES INSTRUMENTATION MOUNTED IN PRODUCTION FACILITY CONTROL PANEL.  
 ○ SEE DWG. 210 FOR ADDITIONAL INSTRUMENTATION MOUNTED IN PRODUCTION FACILITY CONTROL PANEL.

**NOTE:**  
 THIS DRAWING INCLUDES COMPONENTS OF THE FACILITY THAT ARE EXEMPT FROM PERMITTING UNDER VARIOUS PROVISIONS OF RCRA. DATA RELATED TO THESE COMPONENTS IS PROVIDED FOR INFORMATIONAL PURPOSES AND EASE OF REVIEW ONLY, AND THEY ARE NOT INTENDED TO BECOME REGULATED COMPONENTS OF THE HAZARDOUS WASTE FACILITY.

5	3/15/12	NAME CHANGED TO SIEMENS INDUSTRY, INC.	JBE	KEM
4	2/22/07	UPDATED FOR PERMIT SUBMITTAL	JBE	KEM
3	1/10/01	REVISED FOR RCRA PART B PERMIT SUBMITTAL	JBE	---
2	12/06/96	AS BUILT	TGB	---
1	4/11/96	GENERAL REVISIONS	A.L.	KEM
REV.	DATE	REVISION DESCRIPTION	DRAWN	CHK'D
CUSTOMER: SIEMENS INDUSTRY, INC.			DRAWN	ENGR
LOCATION: 2523 WUTAHAR ST. PARKER, AZ 85344			TITLE: REACTIVATION FACILITY PRODUCT HANDLING SYSTEM PIPING & INSTRUMENTATION DIAGRAM	
PROJECT No. 11135			DRAWING No. D1135-218	
DRAWN: A.J.W. 1/14/96			REV. 5	
CHK'D: KEM 1/14/96			PART No.	
ENGR:			DWG No. D1135-218	
PLOT SCALE: NONE			REV. 5	
DO NOT SCALE DRAWING			PRINT DATE: 4/19/12	
THIS DRAWING IS THE PROPERTY OF SIEMENS INDUSTRY, INC. AND IS NOT TO BE REPRODUCED OR DELIVERED TO OTHERS WITHOUT THE EXPRESS WRITTEN PERMISSION OF SIEMENS INDUSTRY, INC.				